

Making a World of Difference

University of Memphis School of Public Health

Lisa M. Klesges, Ph.D., M.S.
Founding Dean

Mid South Medical Group Management Association
September 20, 2012

THE UNIVERSITY OF
MEMPHIS | The School of Public Health

What is Public Health?

- Science and art of protecting and improving the health of communities through *education*, *promotion* of healthy lifestyles, and *research* for disease and injury prevention
- Goal of *preventing* health problems and disease before they occur

Public Health	Clinical Health
Population Health	Individual Disease
Prevention & Health Promotion	Diagnosis and Treatment

THE UNIVERSITY OF
MEMPHIS | School of Public Health

Disciplines in Public Health

- **Biostatistics**
 - › *Explanatory and predictive mathematical modeling*
- **Epidemiology**
 - › *Identifying risk factors and causes of disease*
- **Environmental Health**
 - › *Impact of physical, chemical, and biological factors*
- **Health Administration**
 - › *Business and management of health systems*
- **Social & Behavioral Science**
 - › *Develop community-wide prevention programs*

THE UNIVERSITY OF
MEMPHIS | School of Public Health

Why a School of Public Health?

- › Address recognized needs...
 - › Workforce shortages in public health at local, regional, and national levels
 - › Impact local health needs and disparities for health improvement
 - › No urban-serving TN universities targeting health disparities in public health PhD programs

THE UNIVERSITY OF
MEMPHIS | The School of Public Health

Workforce Needs

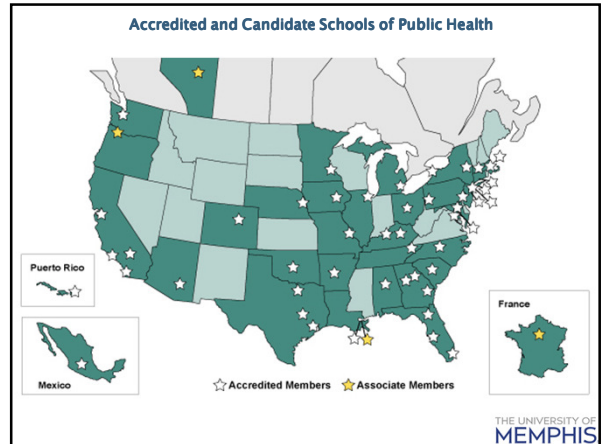
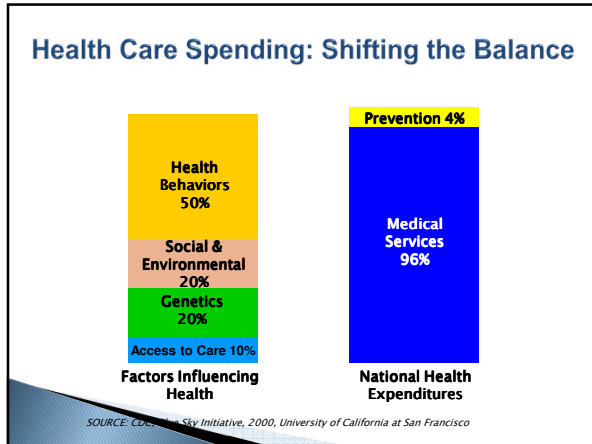
- › Public health workforce crisis at the local, state and federal levels
 - Shortage of 250,000 public health workers by 2020
 - Workforce decline to 158 from 220 workers per 100,000 Americans between 1980 and 2000
 - Greatest shortages: *epidemiologists, biostatisticians, health educators, health administrators, environmental health, laboratory professionals, public health physicians and nurses*
 - Large workforce needs in health informatics

THE UNIVERSITY OF
MEMPHIS | The School of Public Health

Local Health Needs

- › Tennessee health ranking #39 among states
- › 2012 Shelby County Health Rankings (95 counties)
 - › 66st poorest in health factors
 - 12th on clinical care
 - 55th on health risk behavior
 - 85th on social and economic factors
 - 95th on physical environment
 - › 59th in health outcomes
 - 61st in premature death
 - 52nd in morbidity (*e.g., poor physical and mental health days; low birthweight*)

THE UNIVERSITY OF
MEMPHIS | The School of Public Health



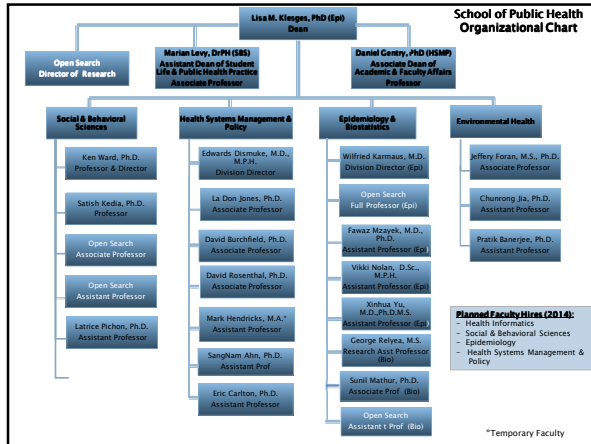
Organization & Operations

THE UNIVERSITY OF MEMPHIS | The School of Public Health

- ### Early History
- 1980's - Discussion of joint UT-UMem SPH
 - 2006 - TBR Approves MPH program
 - 2007 - Director Hired, First students enrolled
 - 2007 - THEC approves School of Public Health
 - 2008 - SPH Director Hired
 - 2009 - SPH "independent" from CAS, MHA program moves to SPH
 - 2010 - 1st PhD program approved by TBR
 - 2011 - Founding Dean hired
 - 2011 - 2nd PhD program approved by TBR
 - 2012 - Accreditation Candidacy
- THE UNIVERSITY OF MEMPHIS | The School of Public Health

- ### Start-up: Structure & Functions
- ▶ Administrative Affairs
 - Administrative Structure, Budget, HR, Space
 - TN Board of Regents & Accreditation Process
 - Dean's Advisory Council
 - ▶ Faculty Affairs
 - Hiring, faculty development, retention
 - Evaluation, Tenure & Promotion
 - Academic & Student Affairs
 - Program Directors (MS, PhD)
 - Curriculum Development
 - Academic oversight w/ Graduate School
 - ▶ Research Affairs
 - ▶ Outreach & External Affairs
- THE UNIVERSITY OF MEMPHIS | The School of Public Health

- ### Dedicated SPH Space
- ▶ Successful renovation and move to Robison Hall in 2012
 - ▶ \$4.5 million renovation project
 - ▶ Faculty, staff, student offices under one roof, smart classrooms, collaborative space
 - ▶ Environmental labs to be finished out over the next year
-
- THE UNIVERSITY OF MEMPHIS | The School of Public Health



Vision, Mission, Goals

THE UNIVERSITY OF MEMPHIS | The School of Public Health

Vision

- ▶ *Dreamers. Thinkers. Doers...* with vision of a...
 - ▶ Premier urban-serving School of Public Health providing education, research and outreach to improve health of populations
- Nationally recognized School with regional impact on health disparities
- Innovative graduate programs preparing students as leaders in population science and public health intervention
- Acclaimed multi-disciplinary public health research producing actionable evidence

THE UNIVERSITY OF MEMPHIS | The School of Public Health

Goals

- ▶ Train next generation of students as leaders in public health focused on health equity
- ▶ Generate world-class multi-disciplinary research of local benefit
- ▶ Engage community partners and collaborators for health improvement with relevant, evidence-based interventions, preventive services, and policies
- ▶ Obtain accreditation from Council on Education for Public Health!

THE UNIVERSITY OF MEMPHIS | The School of Public Health

Transformative Education

- ▶ Integrated *competency-driven* education that addresses equity in health
- ▶ Local-global learning with systems perspective
- ▶ Joint planning of education programs with university affiliates and community input
- ▶ Sensitive to student access
 - Fast-track MPH
 - On-line formats
 - Evening classes
 - Joint degree programs
- ▶ Student development and graduation
 - Mentoring and faculty involvement
 - Internships, practica, career development activity

THE UNIVERSITY OF MEMPHIS | The School of Public Health

Degree Programs

Masters Programs

Masters of Public Health

Masters of Health Administration
(CAHME accredited)

Doctoral Programs

Social & Behavioral Sciences
(Approved 2010)

Epidemiology
(Approved 2011)

Health Systems & Policy
(Pending 2012)

THE UNIVERSITY OF MEMPHIS | School of Public Health

Program Enrollment & Graduation

	Matriculates Fall, 2012	Current Enrollment	Graduated since 2008
MHA	19	43	82
MPH	15	62	44
SBS PhD	2	7	--
EPI PhD	2	7	--

- ▶ Student diversity: 20% Black, 54% White, 26% International
- ▶ Implementing "Day 1" Professional & Leadership Skills Seminar for all SPH masters students
- ▶ Launching national marketing of graduate programs to enhance enrollment
- ▶ Seeking national training grants and endowed scholarships for graduate assistantships

THE UNIVERSITY OF
MEMPHIS | School of Public Health

From our Public Health Students...

Masters of Public Health

<http://youtu.be/ZGmCDvWNOZM>

Masters of Health Administration

<http://youtu.be/UO9owjEEZ7M>

<http://youtu.be/N62j60Eeka0>

Research Priorities

- ▶ Targeted faculty hiring in high priority research areas
- ▶ Conduct research of relevance to reduce disparities in health outcomes
- ▶ Collaborative research within the university and inter-institutional partnerships
- ▶ Explore university-community institute
 - Service and outreach arm to bring public health research scholarship and practice together

THE UNIVERSITY OF
MEMPHIS | The School of Public Health

Partnerships

- ▶ Memphis Research Consortium (UTHSC, St. Jude)
 - Population health improvement with focus on health informatics and obesity prevention
- ▶ FedEx Institute Center for Translational Informatics
- ▶ Triple Aim Regional Collaborative
 - ▶ Partnering with Institute for Health Improvement
 - ▶ *Healthy Shelby* health systems reform initiative under Memphis Fast Forward
- ▶ Community Partnerships
 - Coordinated model for sickle cell transition of care
 - Let's Change! obesity prevention
 - Faith-based health promotion

THE UNIVERSITY OF
MEMPHIS | The School of Public Health

Moving Forward: Accreditation & Sustainability

THE UNIVERSITY OF
MEMPHIS | The School of Public Health

Accreditation Milestones

- ▶ Applied for accreditation candidacy!
 - ▶ Assemble full complement of faculty
 - ▶ Gain state approval of third PhD program
 - ▶ Deepen public health research programs
 - ▶ Graduate first doctoral student
 - ▶ Complete self-study evaluation and strategic planning

THE UNIVERSITY OF
MEMPHIS | School of Public Health

Celebrating Achievements

- ▶ Extramural research dollars growing
 - \$6.5 million in 2011 (primary & subcontracts)
- ▶ Generous Foundation gifts of \$3.82 million
 - \$2.5 million Assisi Foundation
 - \$1.32 million Plough Foundation
- ▶ Private and corporate gifts
 - Mike and Marian Bruns endowed professorship
 - Baptist Memorial Health Care Corp. (CSCP)
 - Endowment to Support Faculty Development
- ▶ SPH Capital Campaign of \$7.5 million for accreditation
 - Additional funds for Fellowships & Faculty Support

THE UNIVERSITY OF
MEMPHIS | The School of Public Health



Mission

*...to improve public health
and promote health equity
by generating knowledge
and translating research
discoveries in our
community, our state and
throughout the world*

THE UNIVERSITY OF
MEMPHIS | The School of Public Health